

LOG OF BOREHOLE 1

Project No. INTL00302101A

Drawing No. 2

Project: Nassau Harbour Expansion

Sheet No. 1 of 1

Location: Nassau Harbour UTM Zone 18R 0264306m east 2776159m north

Date Drilled: May 29, 2008

Auger Sample

Rock Quality Designation (RQD)

Drill Type: CME55 (Barge Mounted)

SPT (N) Value

Natural Moisture

Datum: MLWS (ft)

Dynamic Cone Test

Plastic and Liquid Limit

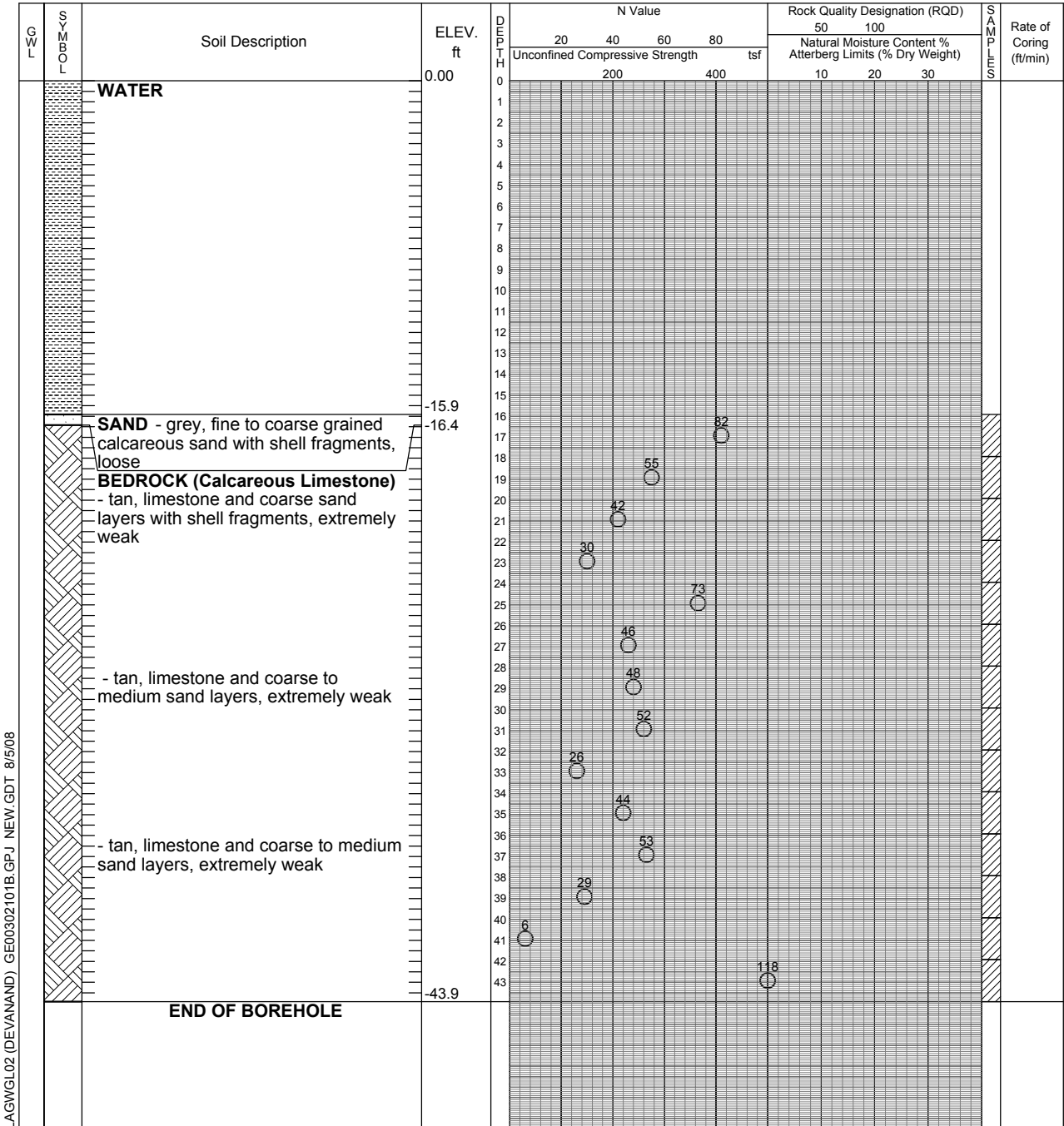
Point Load Test

Undrained Triaxial at

Unconfined Compression

% Strain at Failure

Penetrometer



LAGWGL02 (DEVANAND) GE00302101B.GPJ NEW.GDT 8/5/08



LOG OF BOREHOLE 2

Project No. INTL00302101A

Drawing No. 3

Project: Nassau Harbour Expansion

Sheet No. 1 of 2

Location: Nassau Harbour UTM Zone 18R 0264218m east 2776060m north

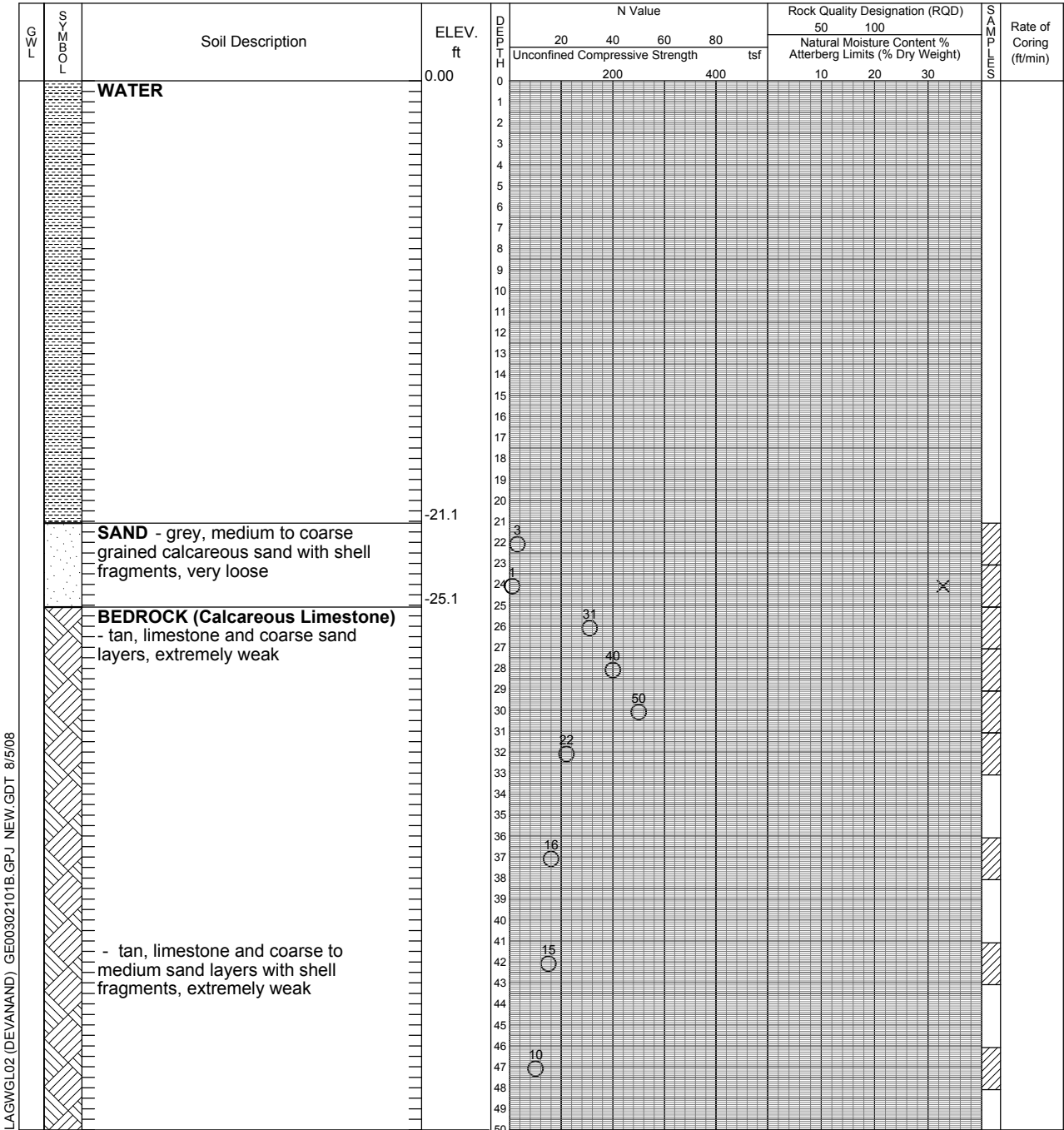
Date Drilled: May 31, 2008

- Auger Sample ☒
- SPT (N) Value ○ ☒
- Dynamic Cone Test —
- Point Load Test U/A S/A
U/L S/L
- Unconfined Compression +

- Rock Quality Designation (RQD) ■
- Natural Moisture ×
- Plastic and Liquid Limit —○
- Undrained Triaxial at % Strain at Failure ⊕
- Penetrometer ▲

Drill Type: CME55 (Barge Mounted)

Datum: MLWS (ft)



LAGWGL02 (DEVANAND) GE00302101B.GPJ NEW.GDT 8/5/08

Continued Next Page



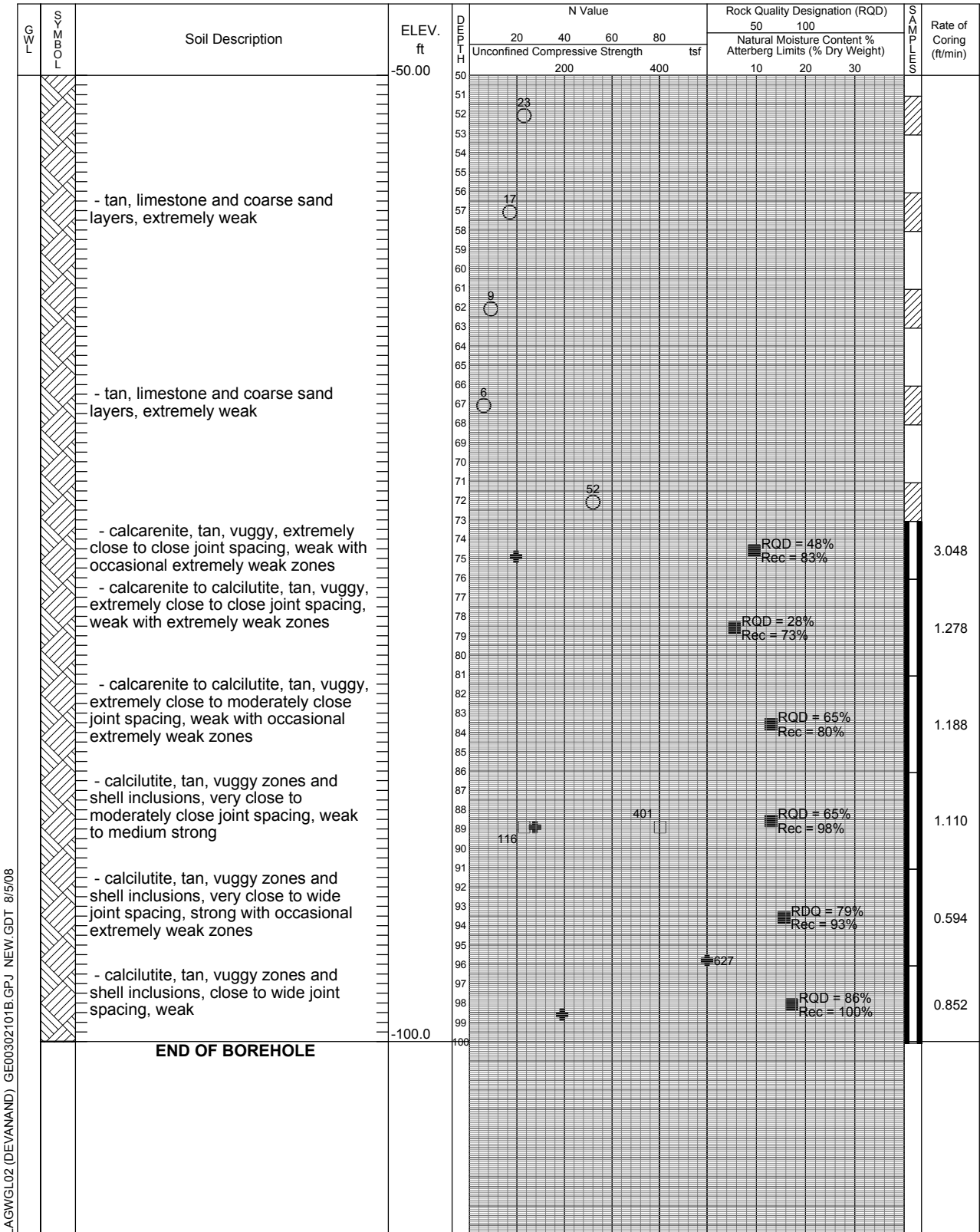
LOG OF BOREHOLE 2

Project No. INTL00302101A

Drawing No. 3

Project: Nassau Harbour Expansion

Sheet No. 2 of 2



LAGWGL02 (DEVANAND) GE00302101B.GPJ NEW.GDT 8/5/08



LOG OF BOREHOLE 3

Project No. INTL00302101A

Drawing No. 4

Project: Nassau Harbour Expansion

Sheet No. 1 of 1

Location: Nassau Harbour UTM Zone 18R 0263775m east 2776341m north

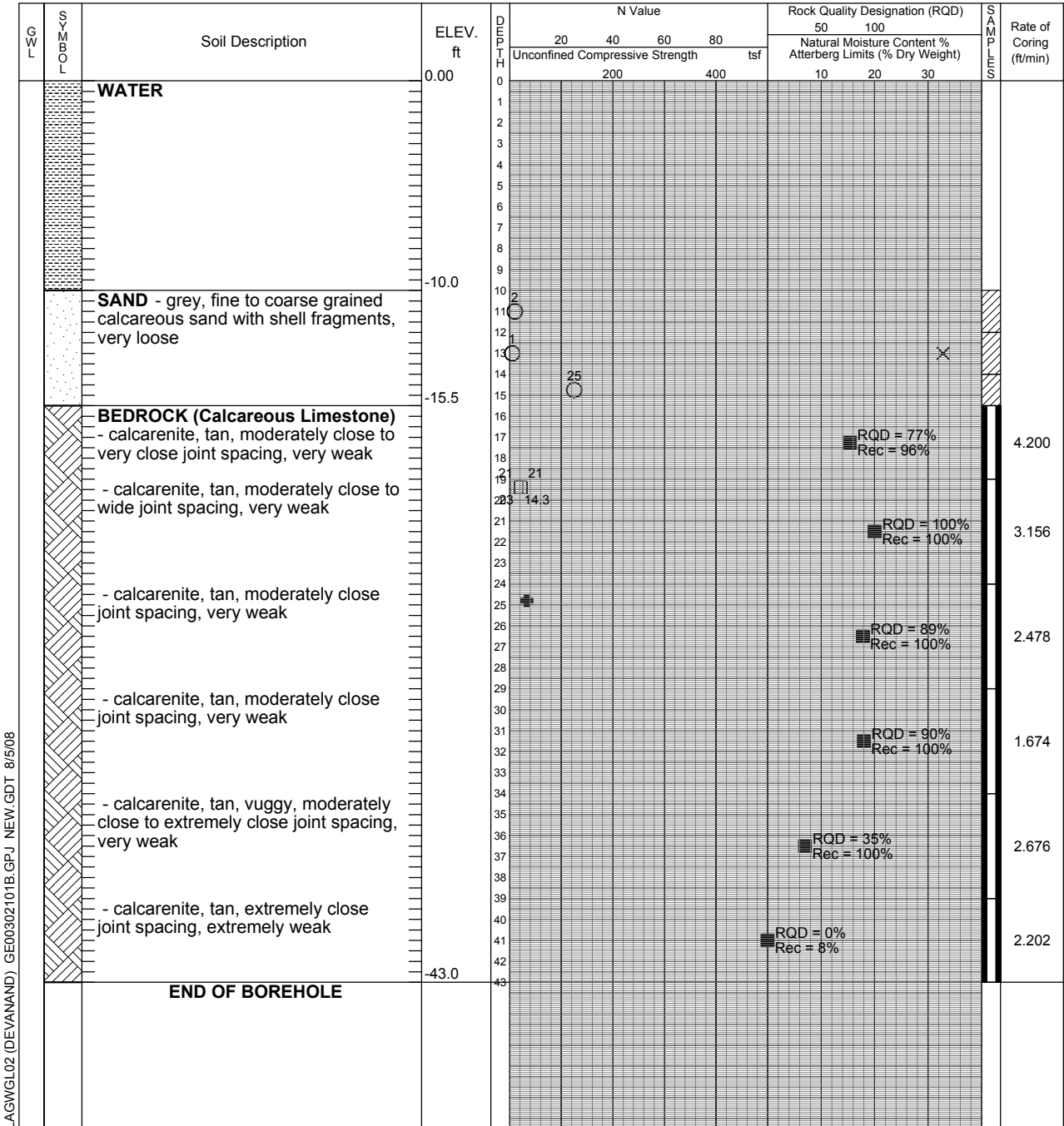
Date Drilled: May 28, 2008

Auger Sample
 SPT (N) Value
 Dynamic Cone Test
 Point Load Test
 Unconfined Compression

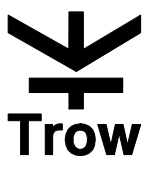
Rock Quality Designation (RQD)
 Natural Moisture
 Plastic and Liquid Limit
 Undrained Triaxial at % Strain at Failure
 Penetrometer

Drill Type: CME55 (Barge Mounted)

Datum: MLWS (ft)



LAGWGL02 (DEVANAND) GE00302101B.GPJ NEW.GDT 8/5/08



LOG OF BOREHOLE 4

Project No. INTL00302101A

Drawing No. 5

Project: Nassau Harbour Expansion

Sheet No. 1 of 2

Location: Nassau Harbour UTM Zone 18R 0263718m east 2776190m north

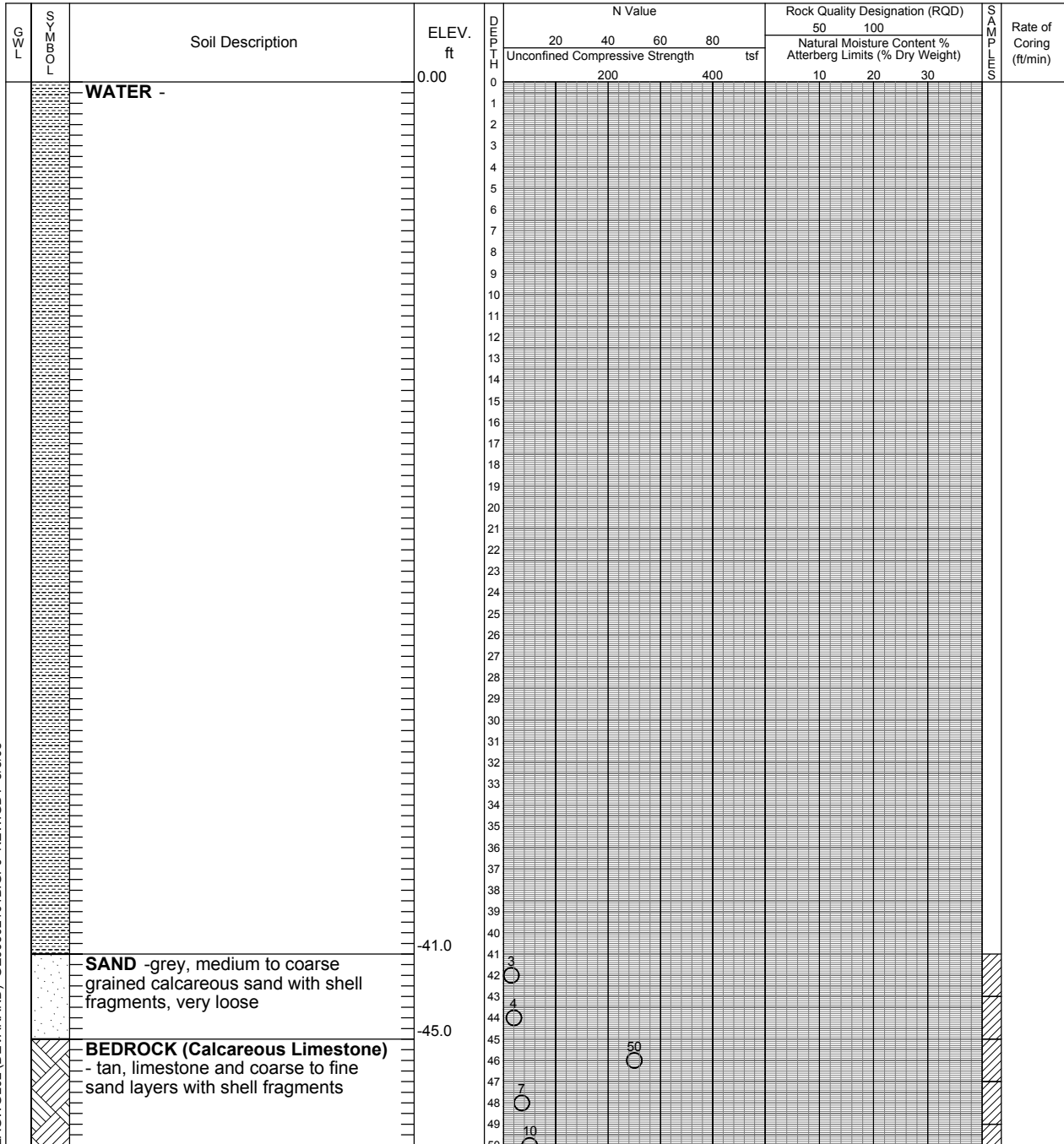
Date Drilled: June 9, 2008

- Auger Sample ☒
- SPT (N) Value ○ ☒
- Dynamic Cone Test —
- Point Load Test U/A S/A
U/L S/L
- Unconfined Compression +

- Rock Quality Designation (RQD) ■
- Natural Moisture ×
- Plastic and Liquid Limit —○
- Undrained Triaxial at % Strain at Failure ⊕
- Penetrometer ▲

Drill Type: CME55 (Barge Mounted)

Datum: MLWS (ft)



LAGWGL02 (DEVANAND) GE00302101B.GPJ NEW.GDT 8/5/08

Continued Next Page



LOG OF BOREHOLE 5

Project No. INTL00302101A

Drawing No. 6

Project: Nassau Harbour Expansion

Sheet No. 1 of 2

Location: Nassau Harbour UTM Zone 18R 0263643m east 2776027m north

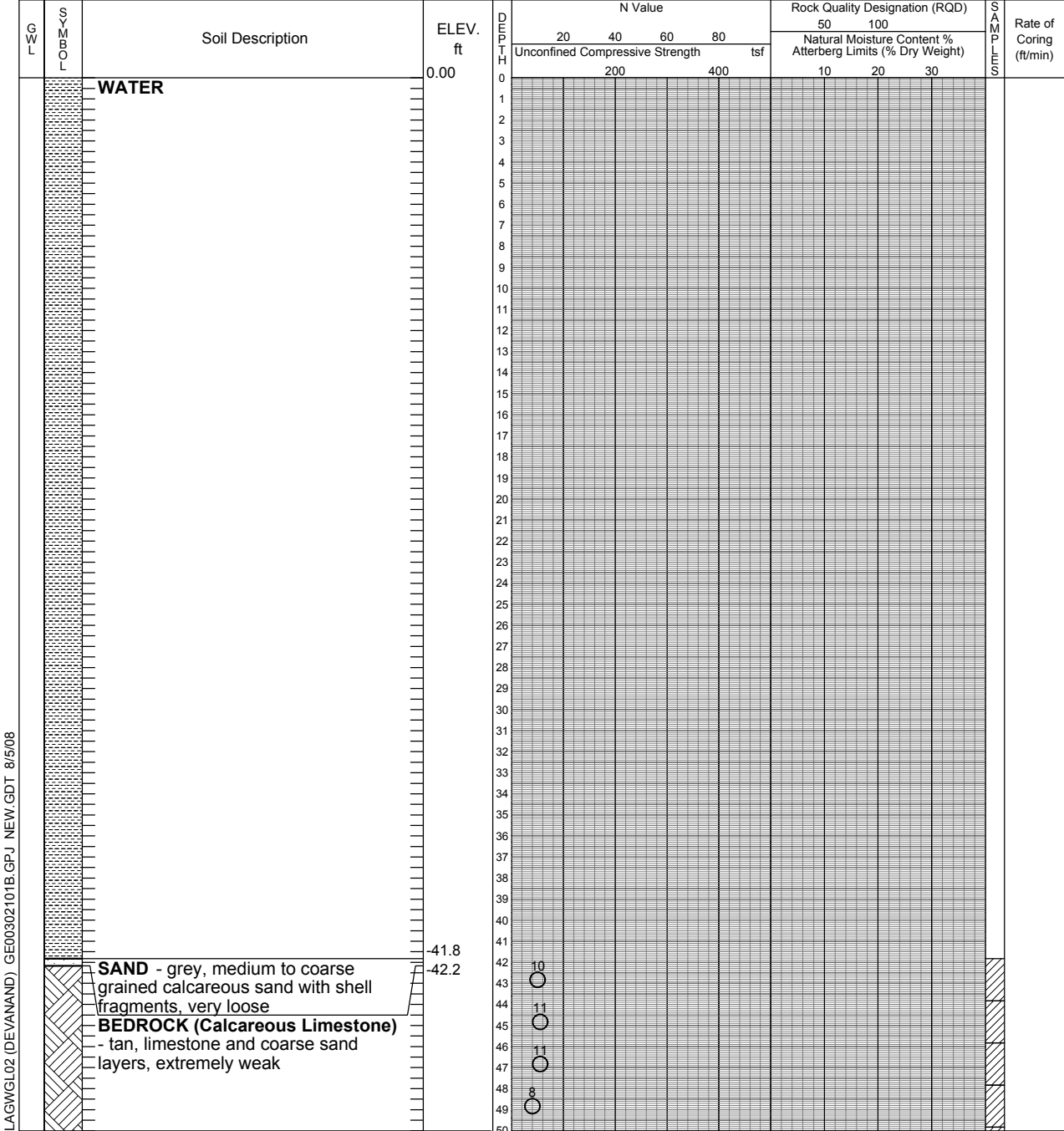
Date Drilled: June 5, 2008

- Auger Sample ☒
- SPT (N) Value ○ ☒
- Dynamic Cone Test — U/A — S/A
- Point Load Test □ U/L — S/L
- Unconfined Compression +

- Rock Quality Designation (RQD) ■
- Natural Moisture ×
- Plastic and Liquid Limit — ⊖
- Undrained Triaxial at % Strain at Failure ⊕
- Penetrometer ▲

Drill Type: CME55 (Barge Mounted)

Datum: MLWS (ft)



LAGWGL02 (DEVANAND) GE00302101B.GPJ NEW.GDT 8/5/08

Continued Next Page



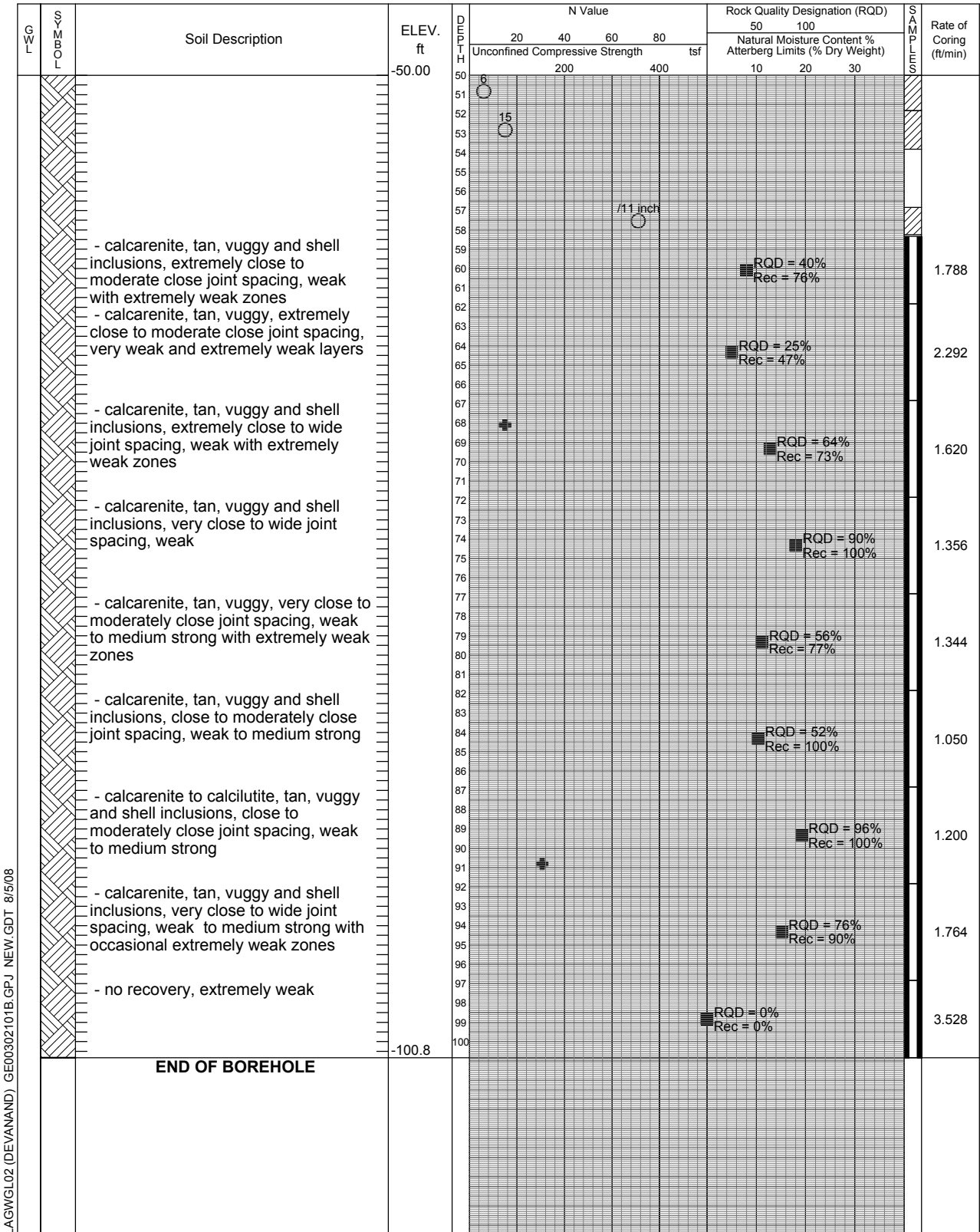
LOG OF BOREHOLE 5

Project No. INTL00302101A

Drawing No. 6

Project: Nassau Harbour Expansion

Sheet No. 2 of 2



LAGWGL02 (DEVANAND) GE00302101B.GPJ NEW.GDT 8/5/08



LOG OF BOREHOLE 6

Project No. INTL00302101A

Drawing No. 7

Project: Nassau Harbour Expansion

Sheet No. 1 of 1

Location: Nassau Harbour UTM Zone 18R 0263587m east 2775859m north

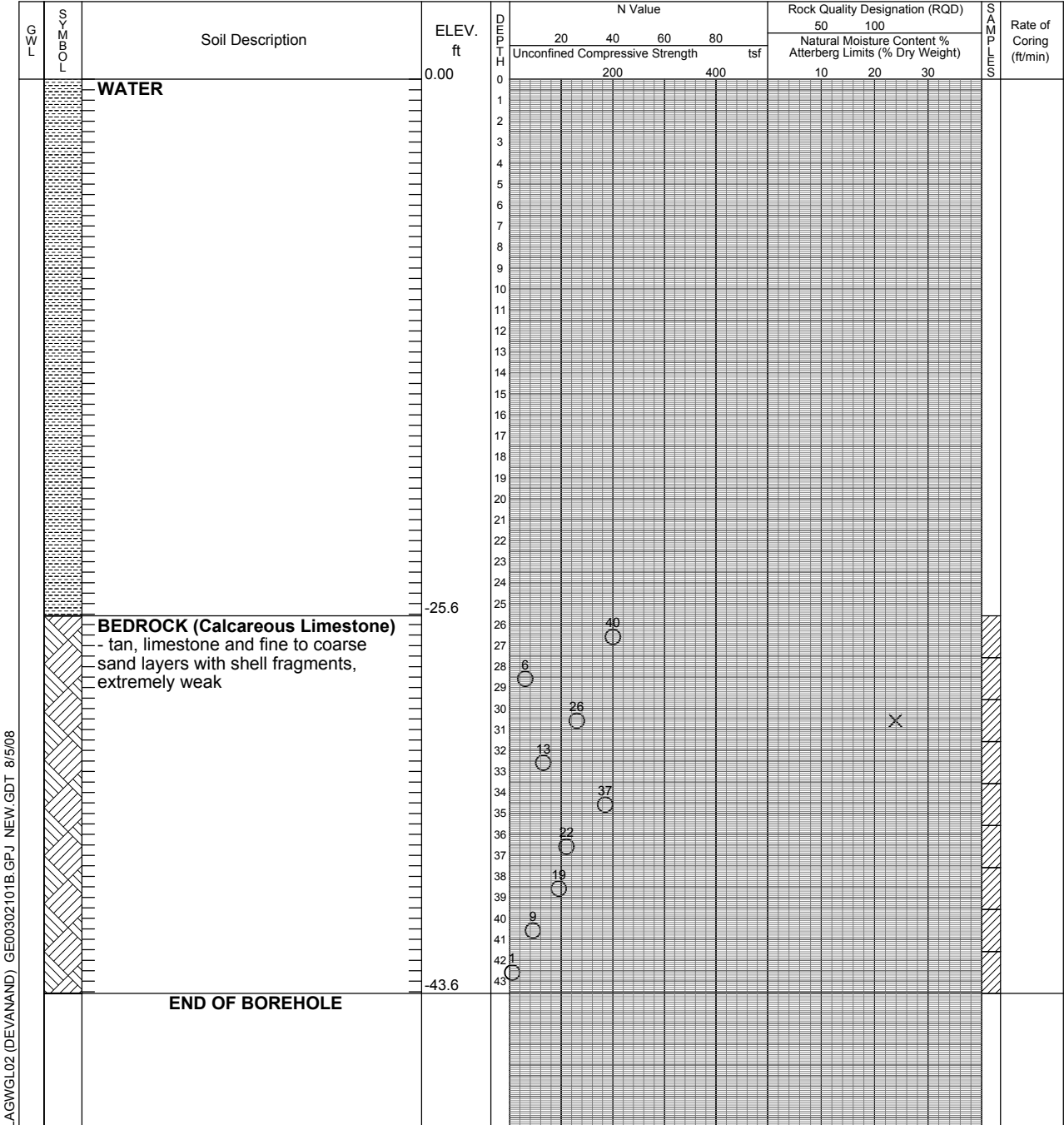
Date Drilled: May 28, 2008

- Auger Sample ☒
- SPT (N) Value ○ ☒
- Dynamic Cone Test — U/A S/A
- Point Load Test □ U/L S/L
- Unconfined Compression +

- Rock Quality Designation (RQD) ■
- Natural Moisture ×
- Plastic and Liquid Limit — ⊖
- Undrained Triaxial at % Strain at Failure ⊕
- Penetrometer ▲

Drill Type: CME55 (Barge Mounted)

Datum: MLWS (ft)



LAGWGL02 (DEVANAND) GE00302101B.GPJ NEW.GDT 8/5/08



LOG OF BOREHOLE 7

Project No. INTL00302101A

Drawing No. 8

Project: Nassau Harbour Expansion

Sheet No. 1 of 1

Location: Nassau Harbour UTM Zone 18R 0263183m east 2775953m north

Date Drilled: May 27, 2008

Auger Sample



Rock Quality Designation (RQD)

SPT (N) Value



Natural Moisture



Drill Type: CME55 (Barge Mounted)

Dynamic Cone Test



Plastic and Liquid Limit



Datum: MLWS (ft)

Point Load Test



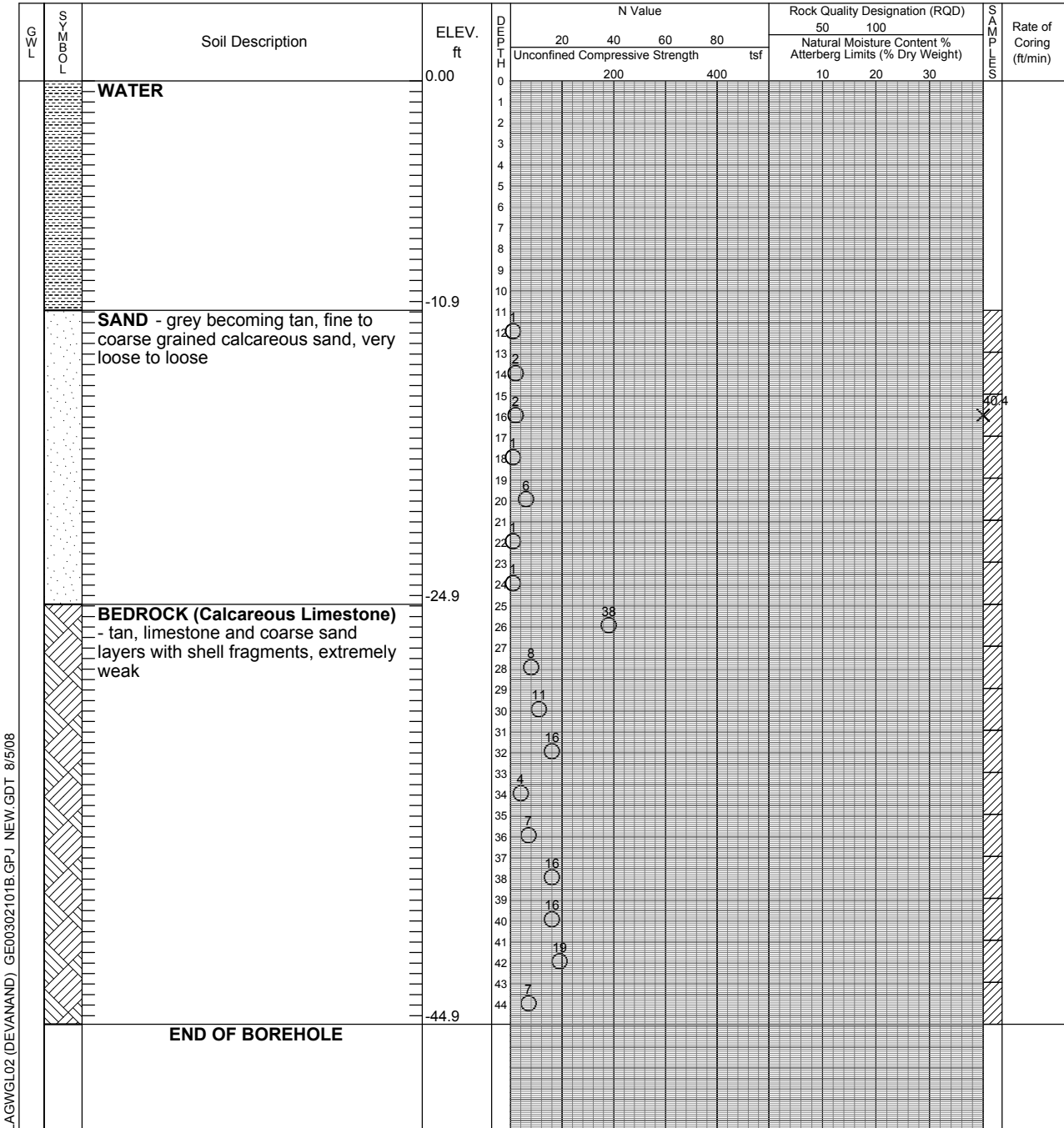
Undrained Triaxial at % Strain at Failure



Unconfined Compression



Penetrometer



LAGWGL02 (DEVANAND) GE00302101B.GPJ NEW.GDT 8/5/08



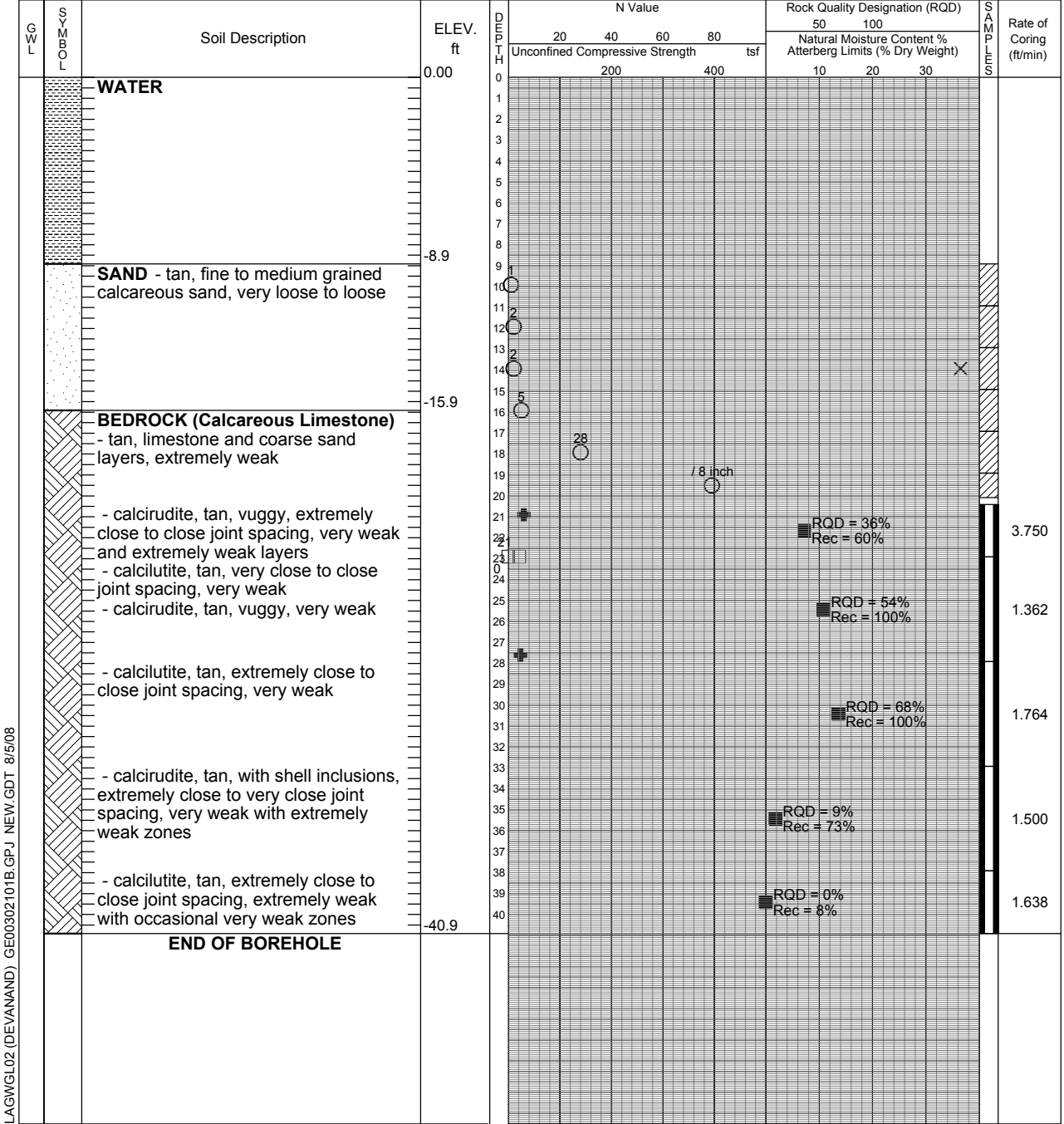
LOG OF BOREHOLE 8

Project No. INTL00302101A Drawing No. 9
 Project: Nassau Harbour Expansion Sheet No. 1 of 1
 Location: Nassau Harbour UTM Zone 18R 0263000m east 2775995m north

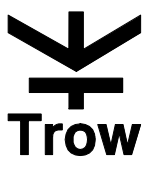
Date Drilled: May 26, 2008
 Drill Type: CME55 (Barge Mounted)
 Datum: MLWS (ft)

Auger Sample
 SPT (N) Value
 Dynamic Cone Test
 Point Load Test
 Unconfined Compression

Rock Quality Designation (RQD)
 Natural Moisture
 Plastic and Liquid Limit
 Undrained Triaxial at % Strain at Failure
 Penetrometer



LAGWGL02 (DEVANAND) GE00302101B.GPJ NEW.GDT 8/5/08



LOG OF BOREHOLE 9

Project No. INTL00302101A

Drawing No. 10

Project: Nassau Harbour Expansion

Sheet No. 1 of 2

Location: Nassau Harbour UTM Zone 18R 0262915m east 2776095m north

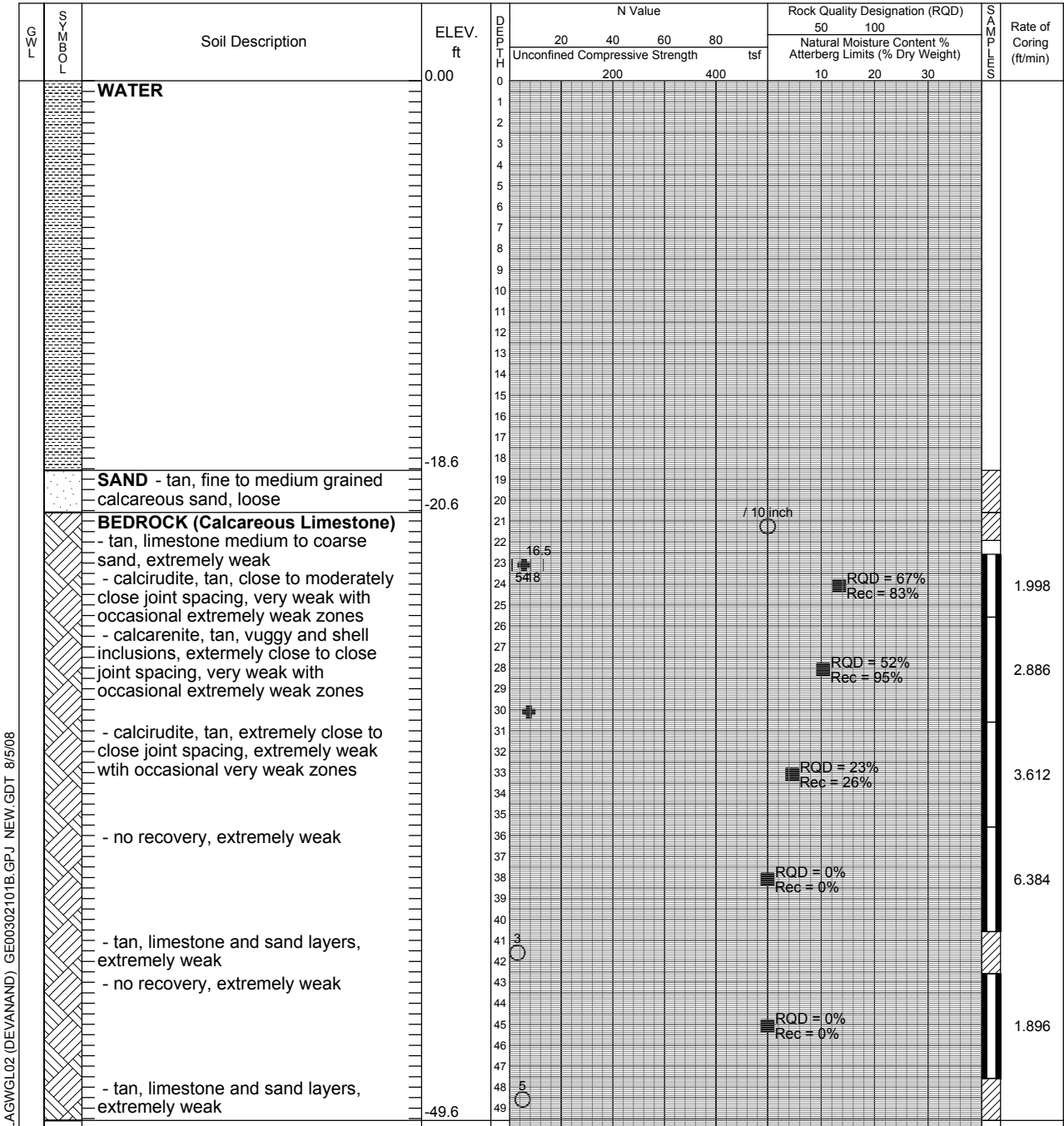
Date Drilled: May 26, 2008

- Auger Sample ☒
- SPT (N) Value ○
- Dynamic Cone Test □
- Point Load Test U/A S/A
- Unconfined Compression U/L S/L
- + +

- Rock Quality Designation (RQD) ■
- Natural Moisture X
- Plastic and Liquid Limit —○
- Undrained Triaxial at % Strain at Failure ⊕
- Penetrometer ▲

Drill Type: CME55 (Barge Mounted)

Datum: MLWS (ft)



LOG OF BOREHOLE 10

Project No. INTL00302101A

Drawing No. 11

Project: Nassau Harbour Expansion

Sheet No. 1 of 1

Location: Nassau Harbour UTM Zone 18R 0262763m east 2776135m north

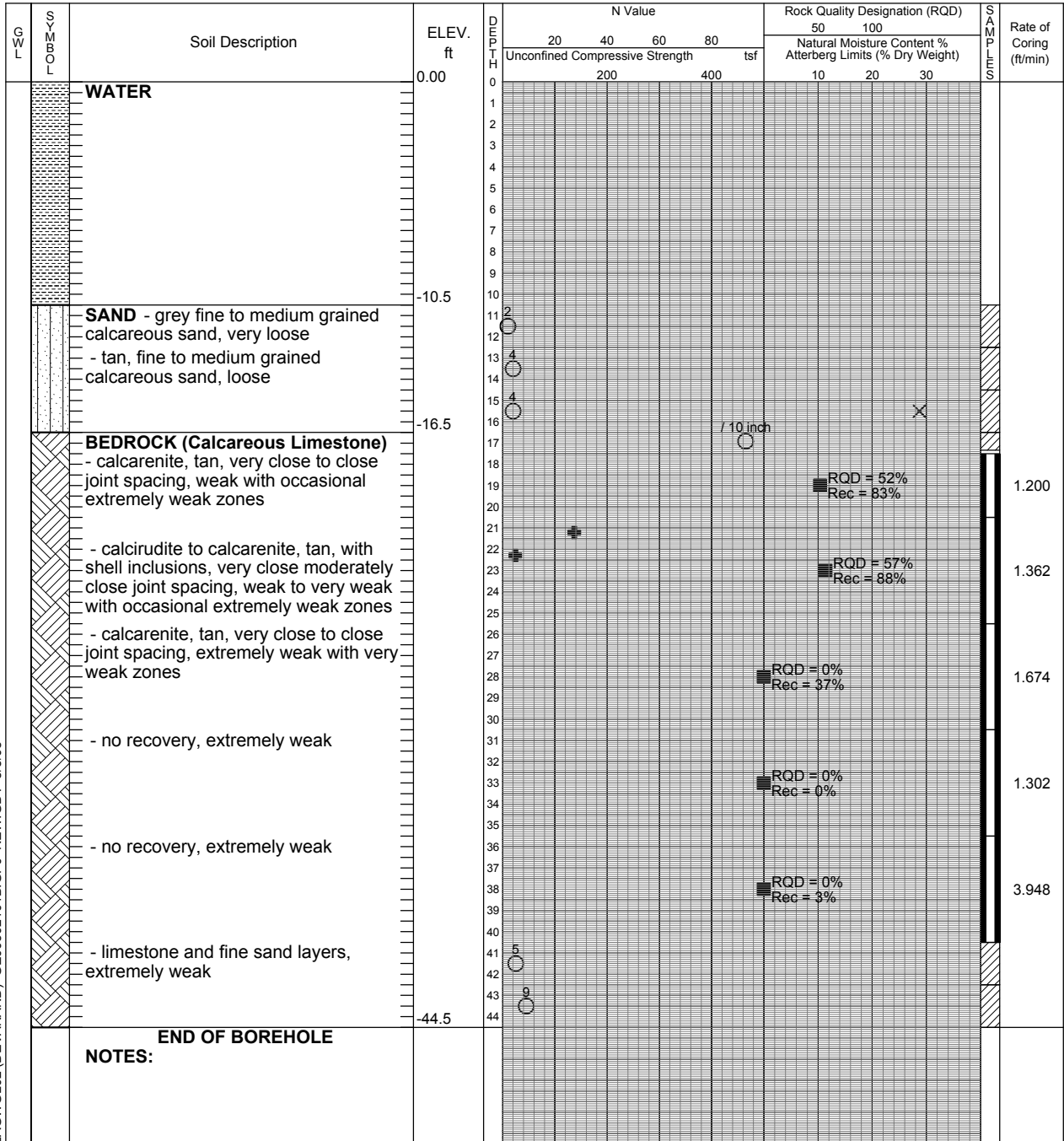
Date Drilled: May 25, 2008

Auger Sample
 SPT (N) Value
 Dynamic Cone Test
 Point Load Test
 Unconfined Compression

Rock Quality Designation (RQD)
 Natural Moisture
 Plastic and Liquid Limit
 Undrained Triaxial at % Strain at Failure
 Penetrometer

Drill Type: CME55 (Barge Mounted)

Datum: MLWS (ft)



LAGWGL02 (DEVANAND) GE00302101B.GPJ NEW.GDT 8/5/08



LOG OF BOREHOLE 11

Project No. INTL00302101A

Drawing No. 12

Project: Nassau Harbour Expansion

Sheet No. 1 of 2

Location: Nassau Harbour UTM Zone 18R 0262668m east 2776261m north

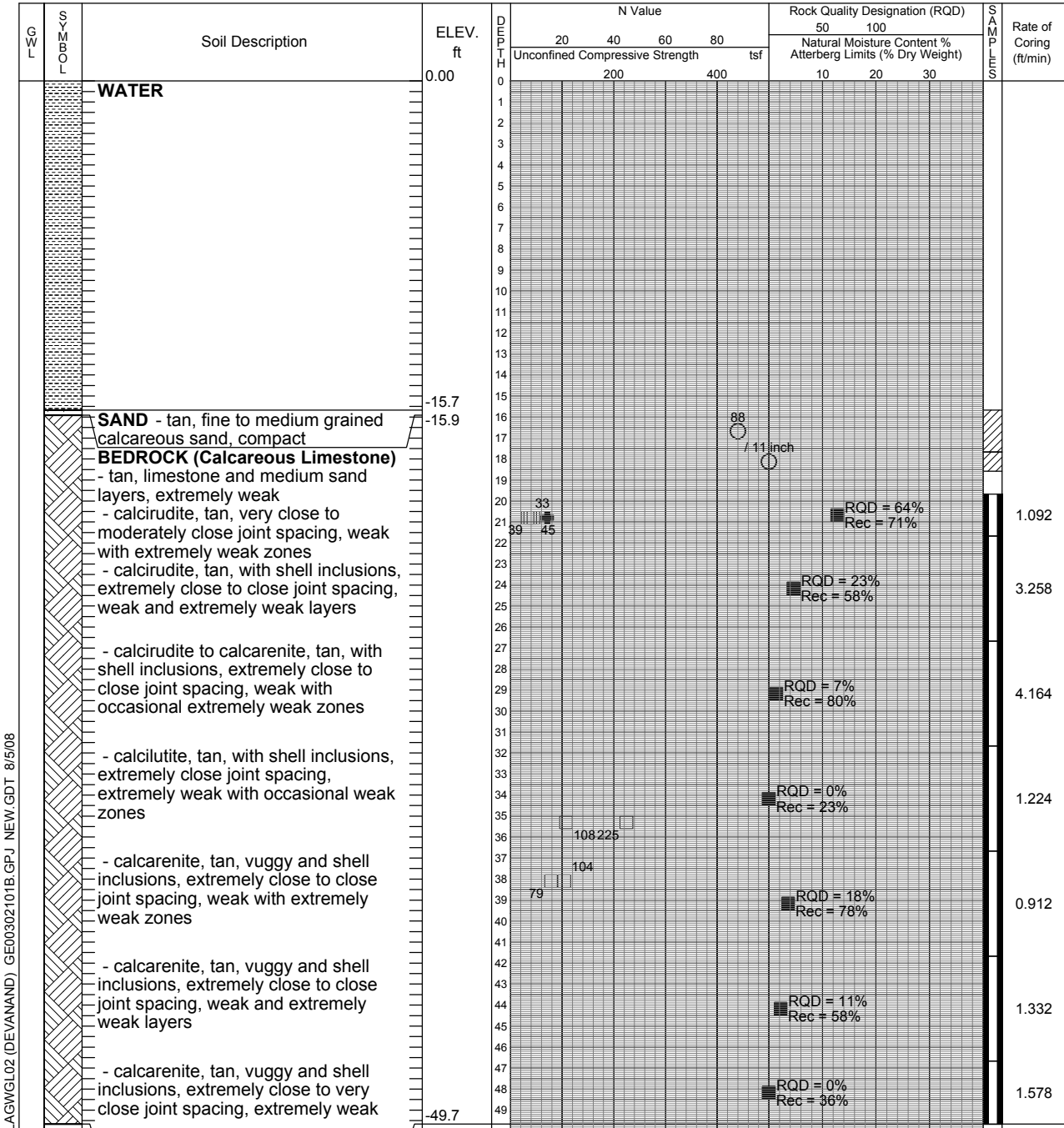
Date Drilled: May 25, 2008

- Auger Sample ☒
- SPT (N) Value ○ ☒
- Dynamic Cone Test —
- Point Load Test U/A S/A
U/L S/L
- Unconfined Compression +

- Rock Quality Designation (RQD) ■
- Natural Moisture X
- Plastic and Liquid Limit —○
- Undrained Triaxial at % Strain at Failure ⊕
- Penetrometer ▲

Drill Type: CME55 (Barge Mounted)

Datum: MLWS (ft)



LAGWGL02 (DEVANAND) GE00302101B.GPJ NEW.GDT 8/5/08

Continued Next Page



LOG OF BOREHOLE 12

Project No. INTL00302101A

Drawing No. 13

Project: Nassau Harbour Expansion

Sheet No. 1 of 1

Location: Nassau Harbour UTM Zone 18R 0263281m east 2776430m north

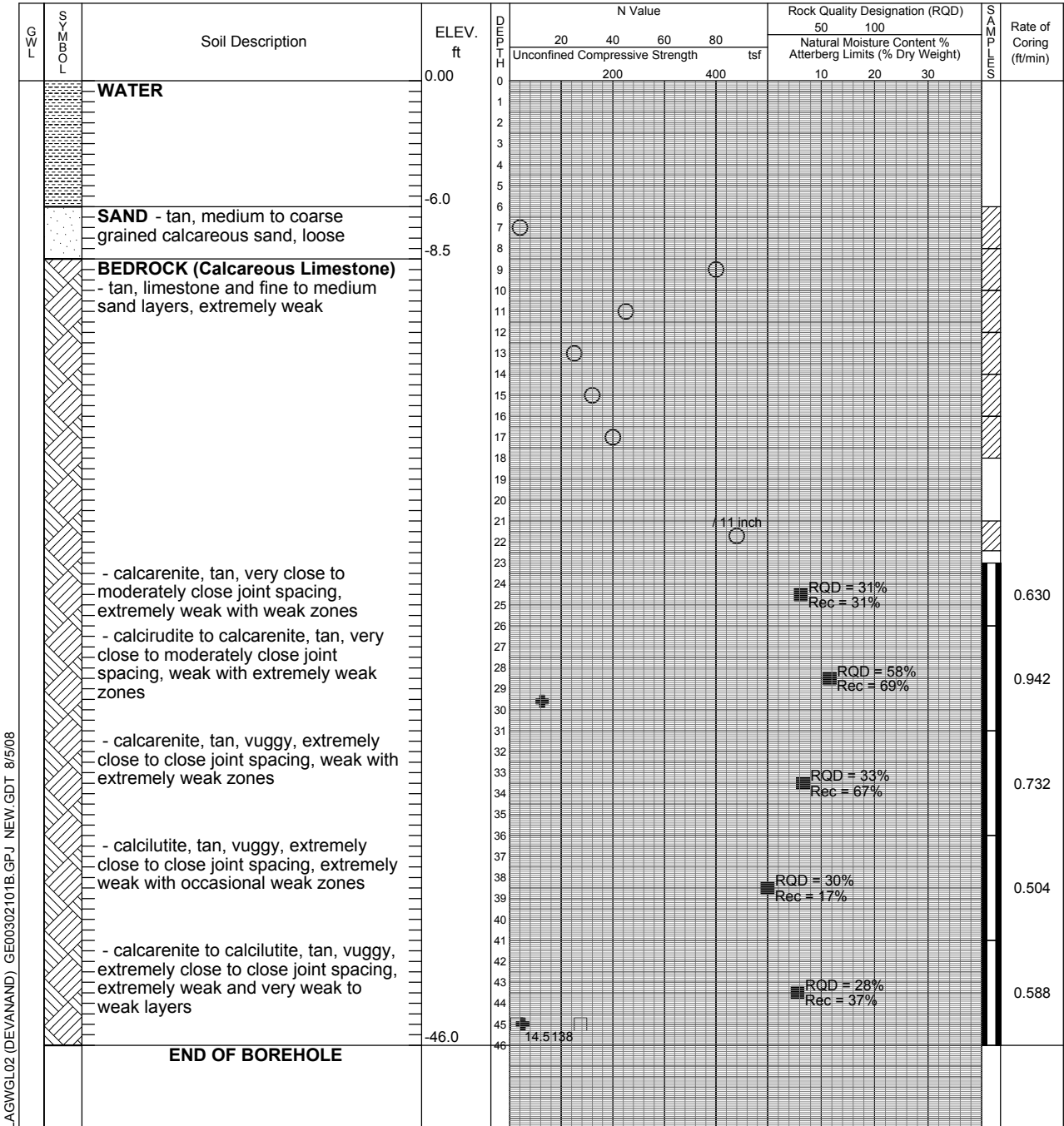
Date Drilled: May 22, 2008

Auger Sample
 SPT (N) Value
 Dynamic Cone Test
 Point Load Test
 Unconfined Compression

Rock Quality Designation (RQD)
 Natural Moisture
 Plastic and Liquid Limit
 Undrained Triaxial at % Strain at Failure
 Penetrometer

Drill Type: CME55 (Barge Mounted)

Datum: MLWS (ft)



LAGWGL02 (DEVANAND) GE00302101B.GPJ NEW.GDT 8/5/08



LOG OF BOREHOLE 14

Project No. INTL00302101A

Drawing No. 15

Project: Nassau Harbour Expansion

Sheet No. 1 of 1

Location: Nassau Harbour UTM Zone 18R 0262809m east 2776553m north

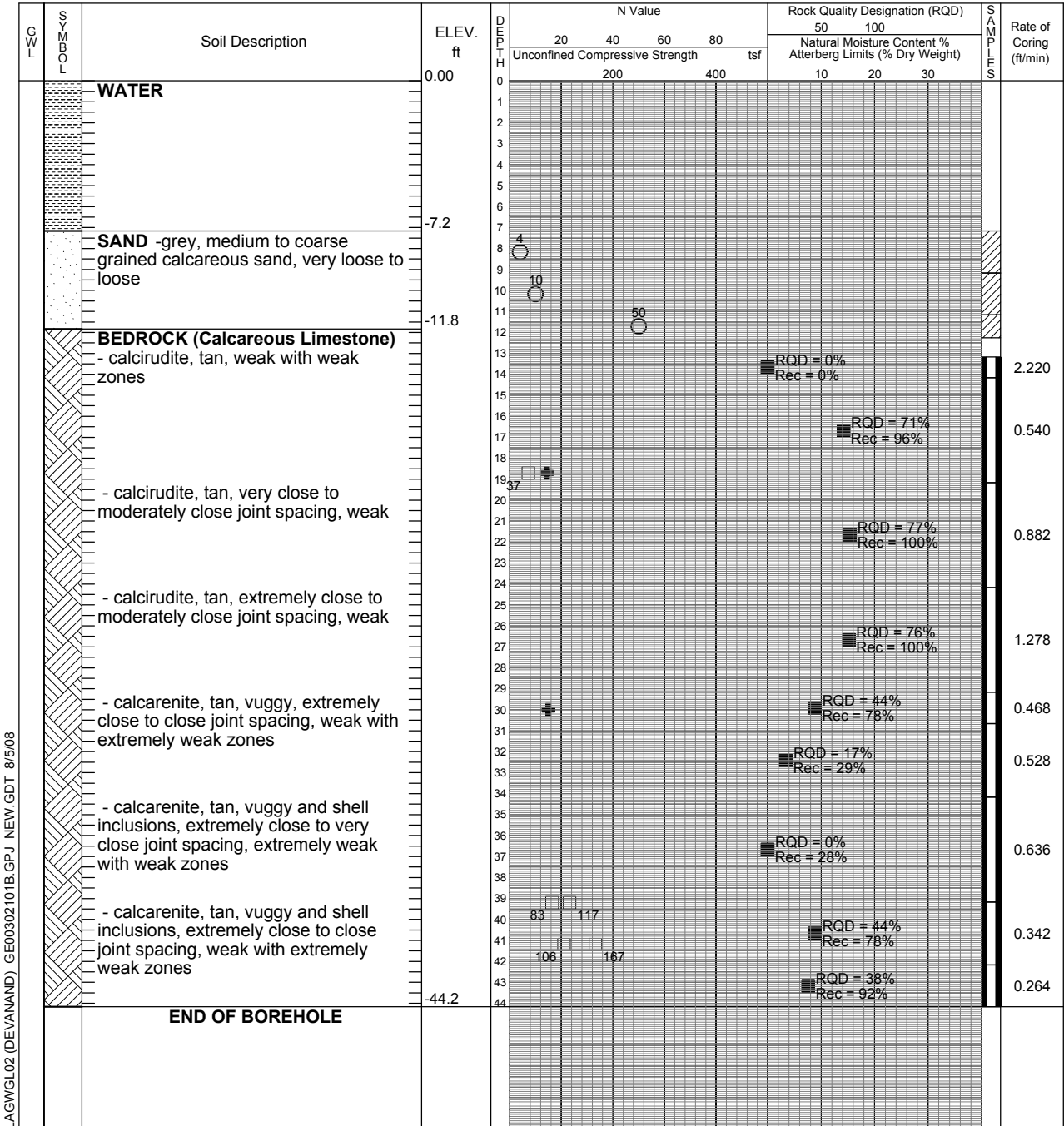
Date Drilled: May 24, 2008

Auger Sample
 SPT (N) Value
 Dynamic Cone Test
 Point Load Test
 Unconfined Compression

Rock Quality Designation (RQD)
 Natural Moisture
 Plastic and Liquid Limit
 Undrained Triaxial at % Strain at Failure
 Penetrometer

Drill Type: CME55 (Barge Mounted)

Datum: MLWS (ft)



LAGWGL02 (DEVANAND) GE00302101B.GPJ NEW GDT 8/5/08



LOG OF BOREHOLE 15

Project No. INTL00302101A

Drawing No. 16

Project: Nassau Harbour Expansion

Sheet No. 1 of 1

Location: Nassau Harbour UTM Zone 18R 0262556m east 2775961m north

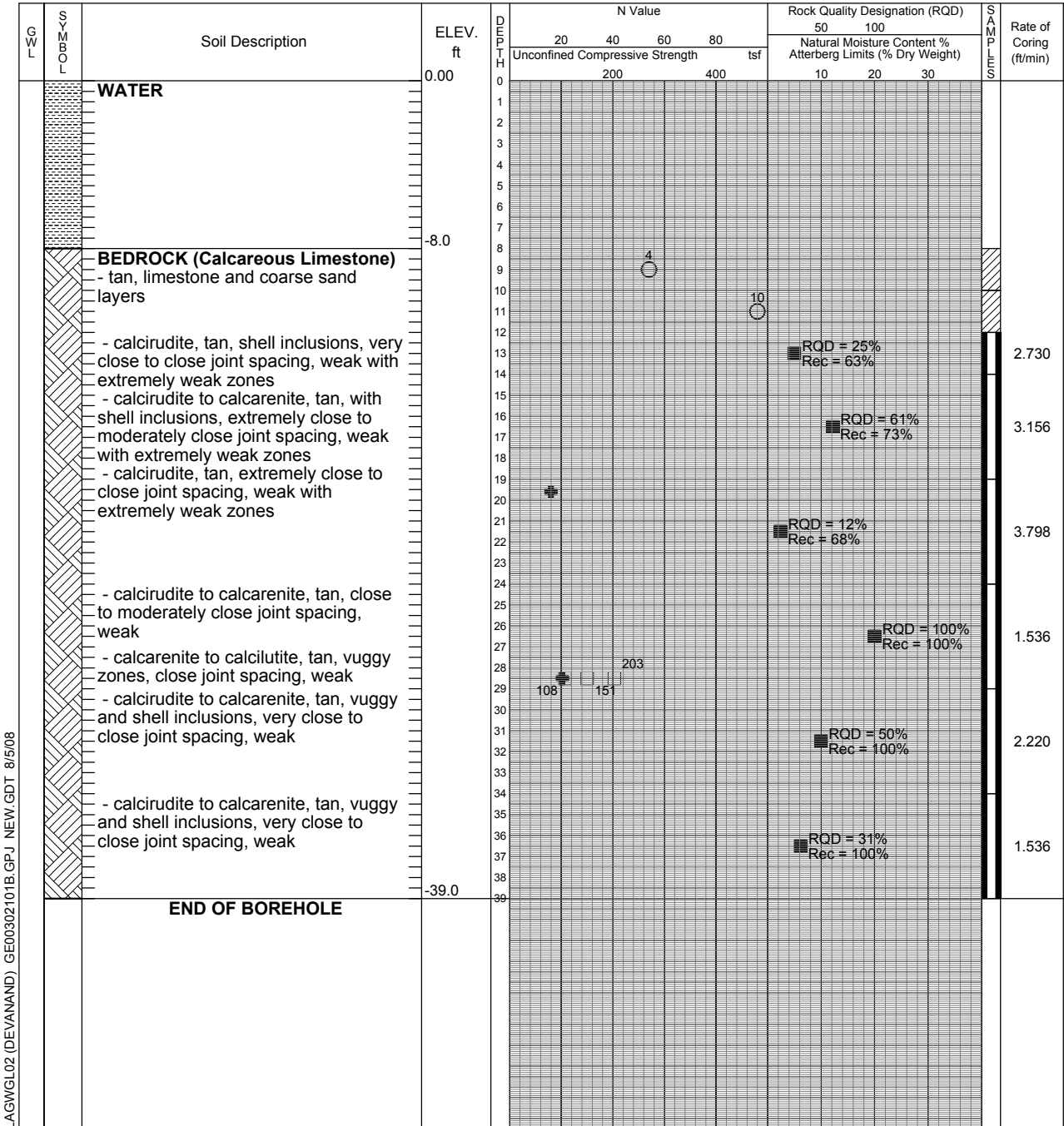
Date Drilled: May 27, 2008

Auger Sample
 SPT (N) Value
 Dynamic Cone Test
 Point Load Test
 Unconfined Compression

Rock Quality Designation (RQD)
 Natural Moisture
 Plastic and Liquid Limit
 Undrained Triaxial at % Strain at Failure
 Penetrometer

Drill Type: CME55 (Barge Mounted)

Datum: MLWS (ft)



LAGWGL02 (DEVANAND) GE00302101B.GPJ NEW.GDT 8/5/08



LOG OF BOREHOLE 16

Project No. INTL00302101A

Drawing No. 17

Project: Nassau Harbour Expansion

Sheet No. 1 of 1

Location: Nassau Harbour UTM Zone 18R 0262419m east 2776624m north

Date Drilled: June 2, 2008

Auger Sample ☒

Rock Quality Designation (RQD) ■

Drill Type: CME55 (Barge Mounted)

SPT (N) Value ○ ☒

Natural Moisture ✕

Datum: MLWS (ft)

Dynamic Cone Test —

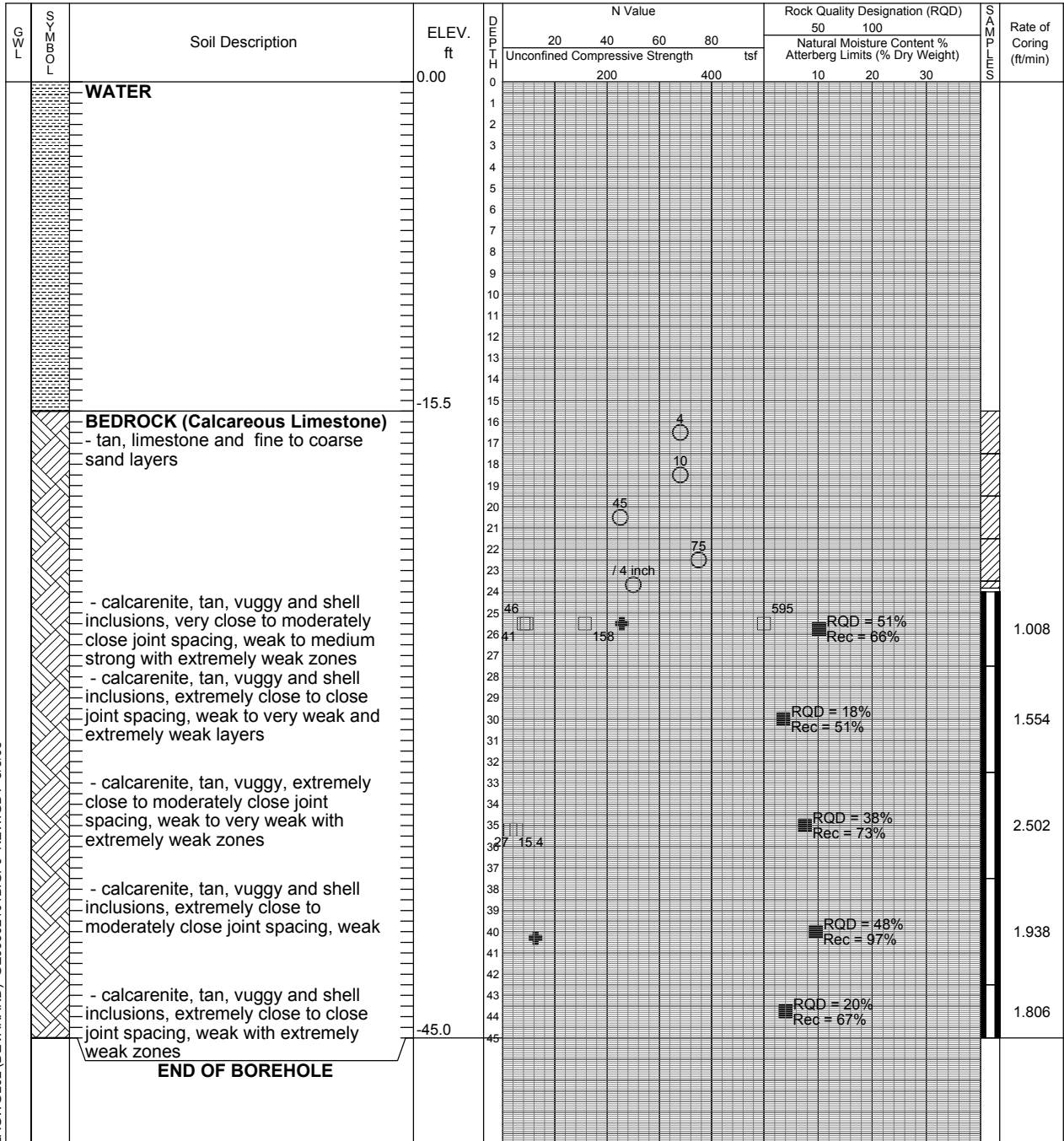
Plastic and Liquid Limit |—○

Point Load Test U/A—S/A
U/L—S/L

Undrained Triaxial at % Strain at Failure ⊕

Unconfined Compression +

Penetrometer ▲



LAGWGL02 (DEVANAND) GE00302101B.GPJ NEW.GDT 8/5/08



LOG OF BOREHOLE 17

Project No. INTL00302101A

Drawing No. 18

Project: Nassau Harbour Expansion

Sheet No. 1 of 1

Location: Nassau Harbour UTM Zone 18R 0262294m east 2776748m north

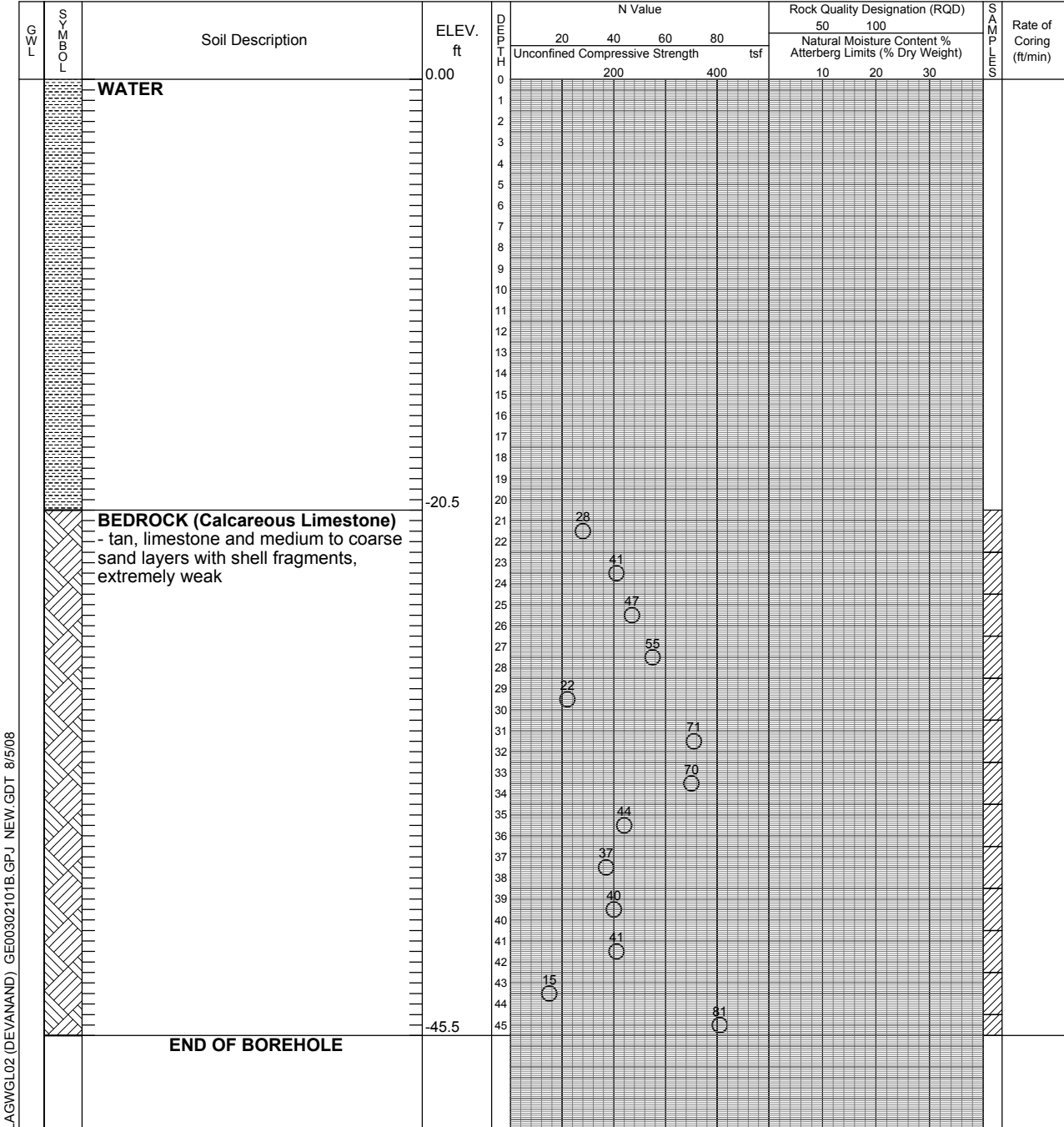
Date Drilled: June 2, 2008

Auger Sample
 SPT (N) Value
 Dynamic Cone Test
 Point Load Test
 Unconfined Compression

Rock Quality Designation (RQD)
 Natural Moisture
 Plastic and Liquid Limit
 Undrained Triaxial at % Strain at Failure
 Penetrometer

Drill Type: CME55 (Barge Mounted)

Datum: MLWS (ft)



LAGWGL02 (DEVANAND) GE00302101B.GPJ NEW.GDT 8/5/08



LOG OF BOREHOLE 18

Project No. INTL00302101A

Drawing No. 19

Project: Nassau Harbour Expansion

Sheet No. 1 of 1

Location: Nassau Harbour UTM Zone 18R 0262142m east 2776809m north

Date Drilled: June 3, 2008

- Auger Sample ☒
- SPT (N) Value ○ ☒
- Dynamic Cone Test — U/A S/A
- Point Load Test □ U/L S/L
- Unconfined Compression +

- Rock Quality Designation (RQD) ■
- Natural Moisture ×
- Plastic and Liquid Limit —○
- Undrained Triaxial at % Strain at Failure ⊕
- Penetrometer ▲

Drill Type: CME55 (Barge Mounted)

Datum: MLWS (ft)

