



ARAWAK CAY PORT DEVELOPMENT COMPANY

# ARAWAK CAY PORT DEVELOPMENT COMPANY

## NASSAU BAHAMAS

August 6, 2009





# Arawak Cay History

2

- 100 Acre Island
- Built in 1969 from Nassau Harbor dredging spoils
- Shipping operations since 1980's, 29 years in operation as a commercial port
- Current shipping area in use is 33 Acres
- Approx. 1/3 of current container volumes enter New Providence through Arawak Cay

# Existing Conditions

Planfile: A/07/2008 7:46 am, 37' NAD83 3767 3467' 1-25/24/2009  
 - 37673467 - Halcrow/200808 Arawak Cay, Bahamas/Design/Phase Layout/ED/ET/AC/08/AC/09



FOR REVIEW ONLY 08/06/09

PROJ. NO.	DNACPD
DESIGN NO.	1.1
DATE	08/06/09
BY	

ARAWAK CAY PORT DEVELOPMENT  
 FOR  
 AC/PC/DC, NASSAU, BAHAMAS  
 AERIAL IMAGE OF  
 EXISTING CONDITIONS

**Halcrow**  
 AERIAL PHOTOGRAPHY  
 1111 Crossroads Drive, Suite 402N  
 Jacksonville, FL 32202  
 Certificate of Authorization Number: 28486

DATE	08/06/09
DESCRIPTION	AC/PC/DC
BY	
CHECKED	
APPROVED	



# Arawak Cay Port Concept

4

- **Use 40 Acres of the Eastern portion of Arawak Cay to expand existing shipping operations, allowing for re-location of Bay Street shipping operations**
- **An additional 7 Acres to be added for Phase 1 (combined with existing 33 Ac. In use now)**
- **Mandated by the Government of the Bahamas, as an important step in revitalizing Downtown Nassau**

# Arawak Cay Port Concept

5

- Relocating Tropical Shipping, Betty K Lines, Atlantic Caribbean Lines, MSC, Seaboard, and the Mailboat Association to new facilities at Arawak Cay International Terminal
- New Port will meet all Bahamian Security requirements and International Maritime Security Requirements (ISPS)
- Port Department will act as Port Facility Security Officer (PFSO)



# Arawak Cay Port Concept

6

- **Inter-Island Ferry (Bahamas Fast Ferry) move to a new terminal location at Arawak Cay is not part of Arawak Cay Port Development Company**
- **Container breakdown for commercial end users at a 20 Ac. (+/-) inland terminal located on Gladstone Road**
- **Container Movements at Off-Peak Times**
- **Project is subject to Government Approval**

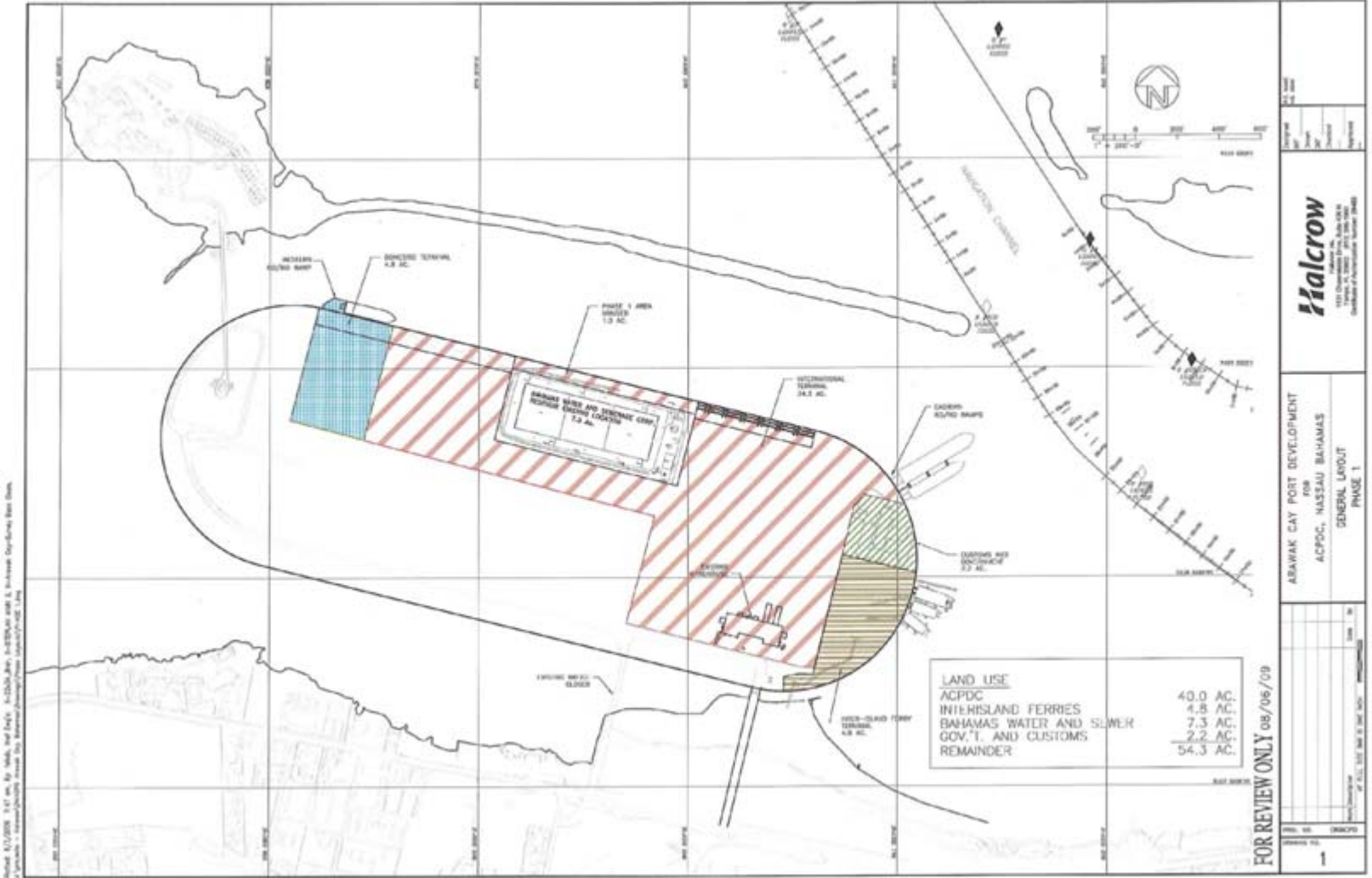
## Phased Construction/Development Approach

### Phase 1 - 40 Acre For International and Domestic Shipping

- Construction of 3000 LF of new Bulkhead on the north side for Entire Port Facility
- Site work for the 20 Acre Inland Terminal,
- Designed for 50 year life based on ECORYS study
- Capital development Budget of \$50M-60M USD

# Site Plan Phase 1

ARAWAK CAY PORT DEVELOPMENT COMPANY





# Concept Design – Marine Terminal

9

**Phase 2 - 10 Ac. For International Terminal Expansion**

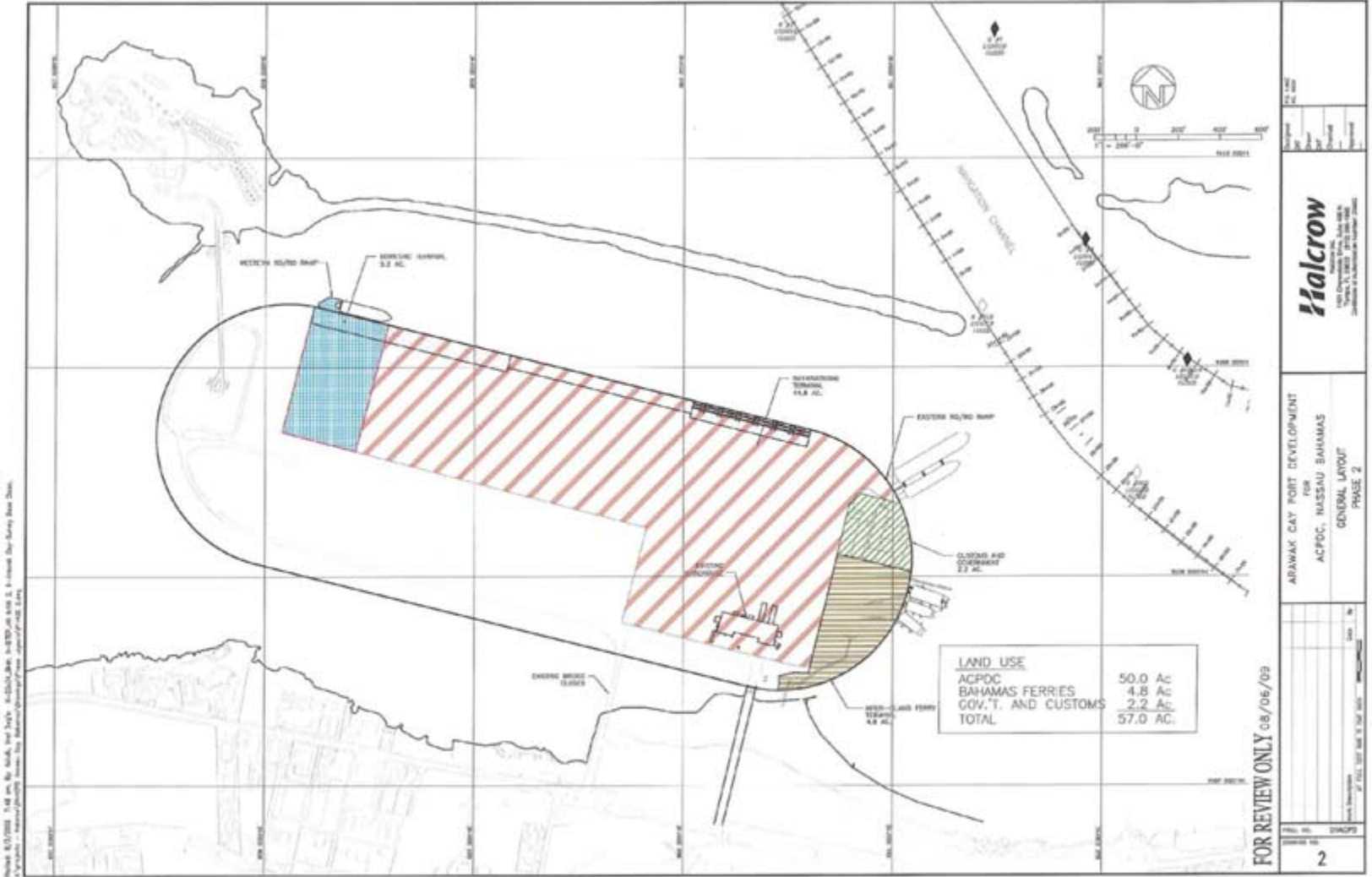
**Dependent on future growth of container and cargo volumes.**

**Removal of existing Bahamas Water and Sewerage Water reservoirs and extension 150 Ft. to the South.**

**Total area of 50 Acres.**

# Site Plan Phase 2

ARAWAK CAY PORT DEVELOPMENT COMPANY





# Concept Design – Marine Terminal

11

ARAWAK CAY PORT DEVELOPMENT COMPANY

**Phase 3 – 5 Ac. For Domestic and Small Carrier Terminal Expansion**

**Dependent on future growth of container and cargo volumes.**

**Total Area of 55 Acres.**



# Concept Design – Inland Terminal

